

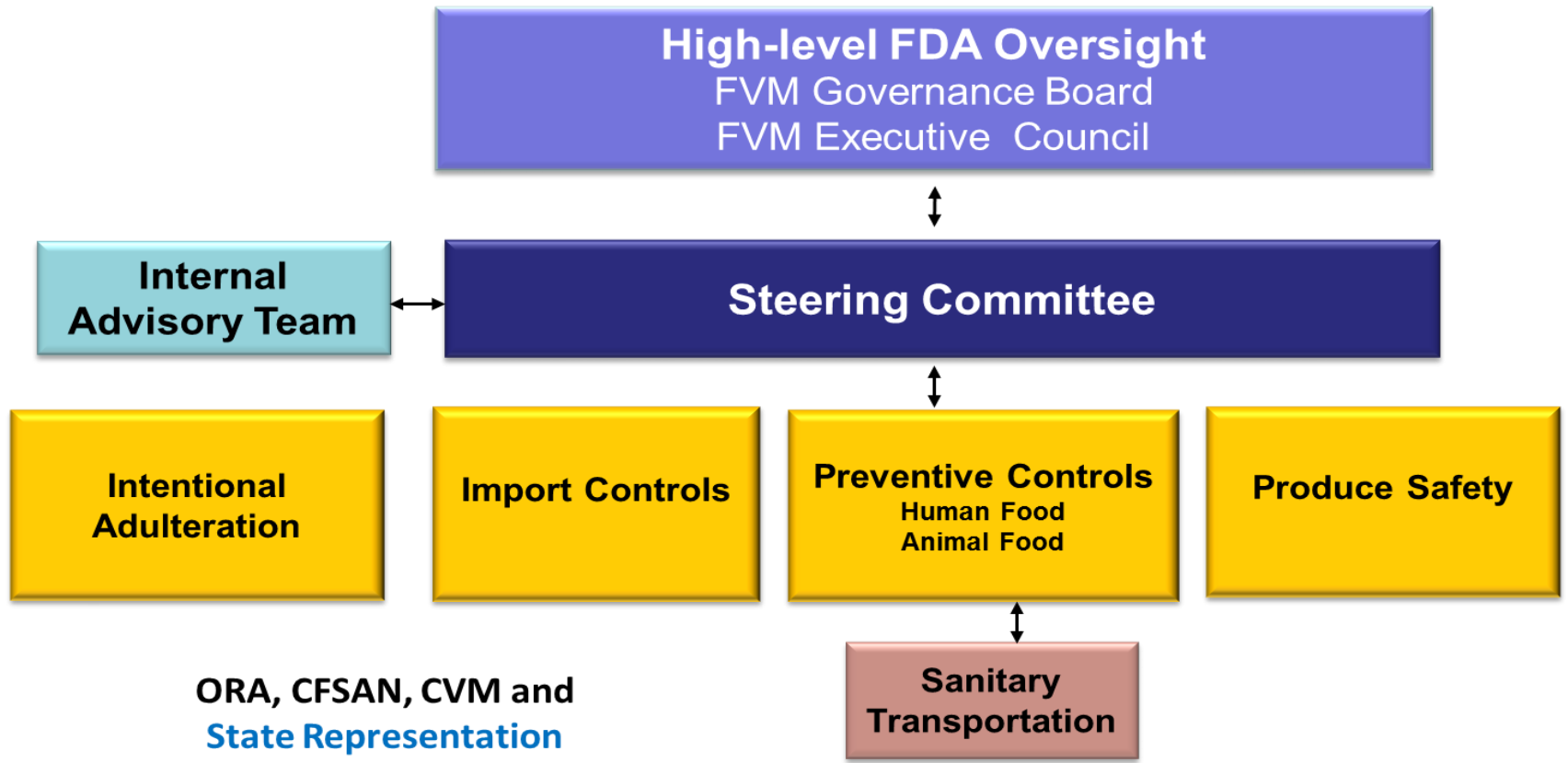
# **State Strategy Work Group Charter**

**Bring together food/feed program leaders/managers with to develop/ recommend multi-year strategies for how FDA will continue to engage/leverage with its State regulatory partners regarding FSMA implementation and, more broadly, in the performance of field operations. Strategies will, in part, drive the allocation of FDA resources through the work plan and to the States through a variety of funding models.**

# FSMA State Strategy Work Group Tasks

- Facilitate food and feed regulatory partners in FSMA implementation and performance of field operations.
- Develop efficient means to allocate FDA resources through funding models
  - Work planning
  - Training/investigator competency
  - Audit oversight (States/FDA)
- State engagement on FSMA Implementation
  - Operational planning
  - Information sharing
  - Technical assistance

# FSMA Phase 2 Organizational Structure





# SKEPTICAL DOG

DOES NOT ACCEPT YOUR ANECDOTAL EVIDENCE