

2018 MFRP Alliance Meeting

State of the States

Clinton Priestley

CSO Auditor

Clinton.Priestley@fda.hhs.gov

FDA/ORO/OHAFO/Audit Staff

Objectives

- What does the MFRPS data say about progress?
- How does the data support Public Health and integration initiatives?
- How does the MFRPS data align with other Regulatory Standards Programs?
- What are the next steps?

Terminology & Methodology

- Definitions:
 - Implementation: have
 - Conformance: have and use
- FY'14 current assessment process established.
- Results are reported as the percentage of states meeting the metric per standard. Results are affected by the sample population.
- Audit Staff collects and analyzes standard specific information. I.e. most common findings.

Contributing Factors to Achieving Implementation and Conformance

- Barriers to Progress in the Standards:
 - Budget constraints during specific FY's
 - State could not expend grant funds
 - State hiring freezes
 - Institutional knowledge lost
 - IT systems lack functionality
- Program Advantages:
 - Institutional knowledge gained
 - Competencies gained or expanded
 - Quality Assurance Practices
 - SOP writing
 - Knowledge of the MFRPS requirements

Interval 1 Implementation Data

Interval 1 (18 month) Implementation	1	2	3	4	5	6	7	8	9	10
FY'17 (n=2)	50	0	50	50	50	0	100	100	100	0
FY'16* (n=0)	N/A	N/A	N/A	N/A	N/A	N/A	N/A	N/A	N/A	N/A
FY'15 (n=5)	0	20	0	0	0	0	80	0	0	0
FY'14 (n=10)	18	27	0	0	0	0	100	9	45	9
All FY (n=42)	38	7	7	7	14	5	74	31	29	17

Implementation data for MFRPS standards 1-10 conducted at the Interval 1 assessment from fiscal years '14 -'17, and the average from all fiscal years. Data is presented as the percent of state programs at full implementation. *No Interval 1 assessments were scheduled in FY'16.

Interval 2 Implementation Data

Interval 2 (36 month) Implementation	1	2	3	4	5	6	7	8	9	10
FY'17* (n=0)	N/A	N/A	N/A	N/A	N/A	N/A	N/A	N/A	N/A	N/A
FY'16 (n=10)	80	50	50	30	60	20	90	80	50	40
FY'15 (n=11)	55	45	27	18	9	27	82	64	36	0
FY'14 (n=6)	33	50	33	33	33	17	100	33	100	17
All FY (n=39)	51	46	26	21	28	21	87	59	46	15

Implementation data for MFRPS standards 1-10 conducted at the Interval 2 assessment from fiscal years '14 -'17, and the average from all fiscal years. Data is presented as the percent of state programs at full Implementation. *No Interval 2 assessments were scheduled in FY'17.

Interval 3 Implementation Data

Interval 3 (60 month) Implementation	1	2	3	4	5	6	7	8	9	10
FY'17 (n=16)	100	94	69	88	81	81	88	100	88	81
FY'16 (n=9)	100	89	78	78	100	78	100	100	100	78
FY'15 (n=5)	100	80	100	60	80	20	100	100	100	60
FY'14 (n=5)	40	40	60	60	80	60	100	100	100	60
All FY (n=35)	91	83	74	77	83	69	94	100	94	74

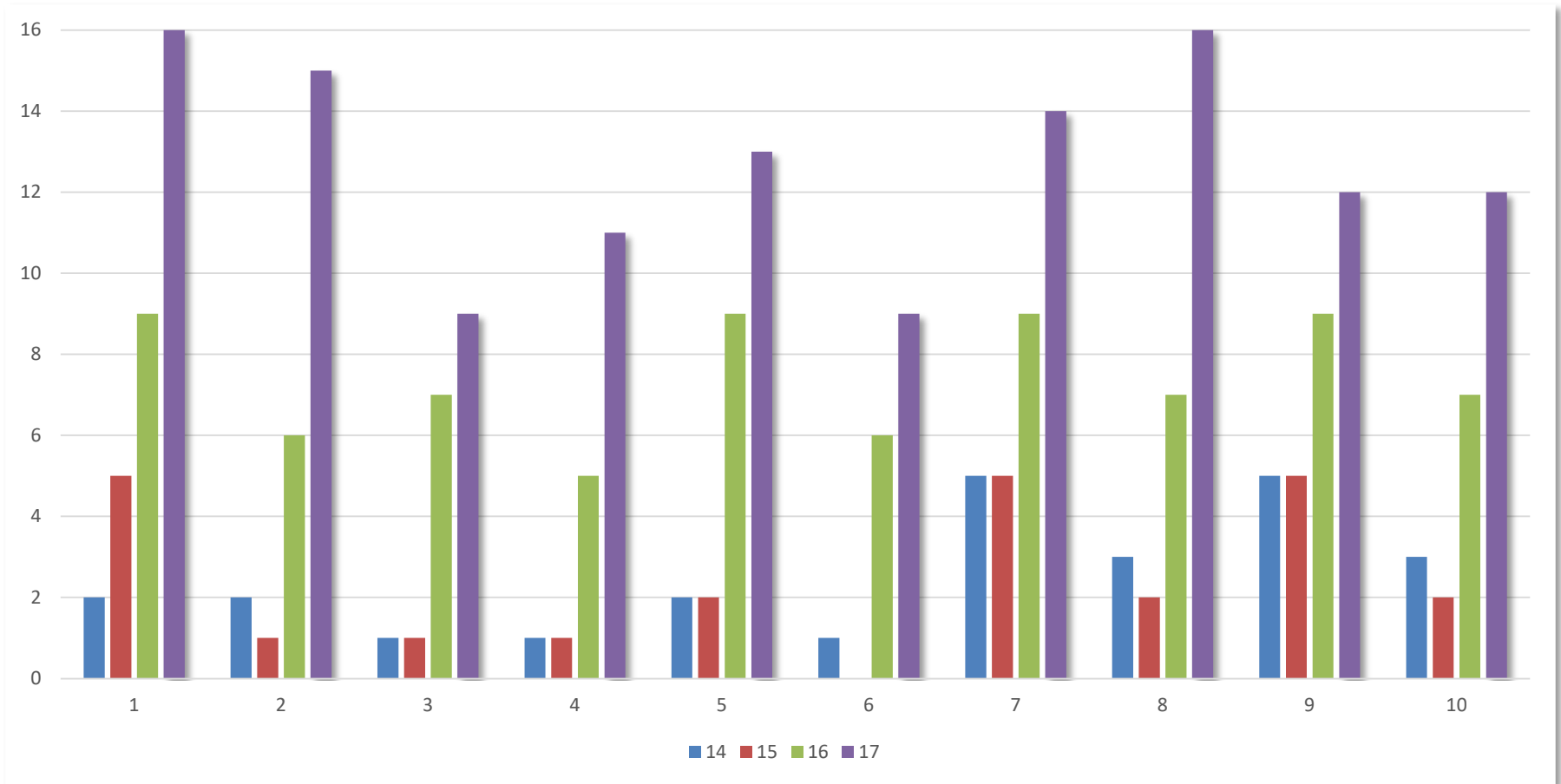
Implementation data for MFRPS standards 1-10 conducted at the Interval 3 assessment from fiscal years '14 -'17, and the average from all fiscal years. Data is presented as the percent of state programs at full Implementation.

Interval 3 Conformance Data

Interval 3 (60 month) Conformance	1	2	3	4	5	6	7	8	9	10
FY'17 (n=16)	100	94	56	69	81	56	88	100	75	75
FY'16 (n=9)	100	67	78	56	100	67	100	78	100	78
FY'15 (n=5)	100	20	20	20	40	0	100	40	100	40
FY'14 (n=5)	40	40	20	20	40	20	100	60	100	60
All FY (n=35)	91	69	51	51	77	49	94	83	86	69

Conformance data for MFRPS standards 1-10 conducted at the Interval 3 assessment from fiscal years '14-'17, and the average from all fiscal years. Data is presented as the percent at full conformance.

Interval 3 Conformance Data



Conformance data for MFRPS standards 1-10 conducted at the Interval 3 assessment from fiscal years '14-'17. Data is presented as the **number** of state programs at full conformance.

Interval 4 Implementation Data

Interval 4 (84 month) Implementation	1	2	3	4	5	6	7	8	9	10
FY'17 (n=5)	100	100	100	100	100	80	100	100	80	100
FY'16 (n=5)	80	80	80	100	100	80	100	100	100	80
All FY (n=10)	90	90	90	100	100	80	100	100	90	90

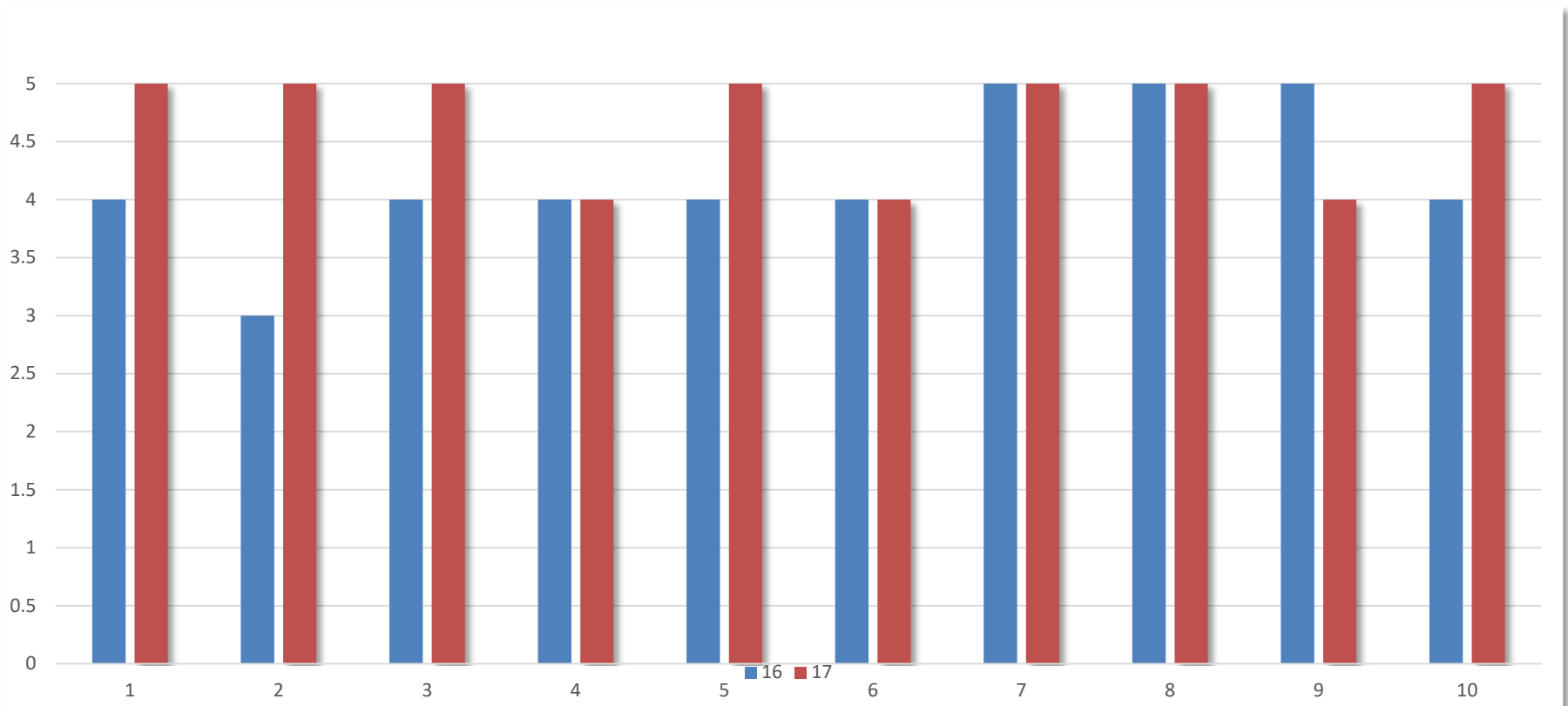
Implementation data for MFRPS standards 1-10 conducted at the Interval 4 assessment during fiscal years '16-'17, and the average from all fiscal years. Data is presented as the percent at full implementation.

Interval 4 Conformance Data

Interval 4 (84 month) Conformance	1	2	3	4	5	6	7	8	9	10
FY'17 (n=5)	100	100	100	80	100	40	100	100	80	100
FY'16 (n=5)	80	60	80	80	80	80	100	100	100	80
All FY (n=10)	90	90	90	80	90	60	100	100	90	90

Conformance data for MFRPS standards 1-10 conducted at the Interval 4 assessment during fiscal years '16-'17, and the average from all fiscal years. Data is presented as the percent at full conformance.

Interval 4 Conformance Data



Conformance data for MFRPS standards 1-10 conducted at the Interval 4 assessment during fiscal years '16-'17. Data is presented as the **number** of state programs at full conformance.

The Standards

Std	MFRPS	AFRPS	VNFRPS	System Recognition (ICAT)
1	Regulatory Foundation	Regulatory Foundation	Regulatory Foundation	Legal and Regulatory Foundation
2	Training Program	Training	Trained Regulatory Staff	Training Program
3	Inspection Program (Sampling Program)	Inspection Program	Inspection Program Based on HACCP Principles	Inspection Program
4	Inspection Audit Program	Auditing	Uniform Inspection Program	Program Assessment and Audit Program
5	Food-Related Illness, Outbreak, and Hazards Response	Feed-Related Illnesses or Death and Emergency Response	Foodborne Illness and Food Defense Preparedness and Response	Food-Related Illness and Outbreaks
6	Compliance and Enforcement Program	Enforcement Program	Compliance and Enforcement	Compliance and Enforcement Program
7	Industry and Community Relations	Outreach Activities	Industry and Community Relations	Industry and Community Relations
8	Program Resources	Planning and Resources	Program Support and Resources	Program Resources
9	Program Assessment	Assessment and Improvement	Program Assessment	International Communication and Harmonization
10	Laboratory Support	Laboratory Services	N/A	Laboratory Support
11	N/A	Sampling Program	N/A	N/A

Closing Thoughts

- Progress is being made.
 - Are we planning appropriately for the next steps?
- Conformance supports State and FDA initiatives including:
 - Mutual Reliance
 - National Work Planning for inspections and sampling
 - IT – data exchange project
 - RRT and Emergency Response
- Can the Regulatory Program Standards harmonize?
- Are we thinking ahead?
 - What does conformance mean?
 - How will conformance affect integration?



Questions & Open Discussion